



DARK BLUE MTR

TOP DYEING - 2%

SPLIT - 3%



PENETRATION



60° Solubility	Penetration	Light	F A S T N E S S					
			PERSPIRATION			WASHING		
			CS	SC	SW	CS	SC	SW
60	4	6-7	4-5	4-5	4-5	3	3	3-4

SCALE - 1 TO 5

CS - COTTON + SILK

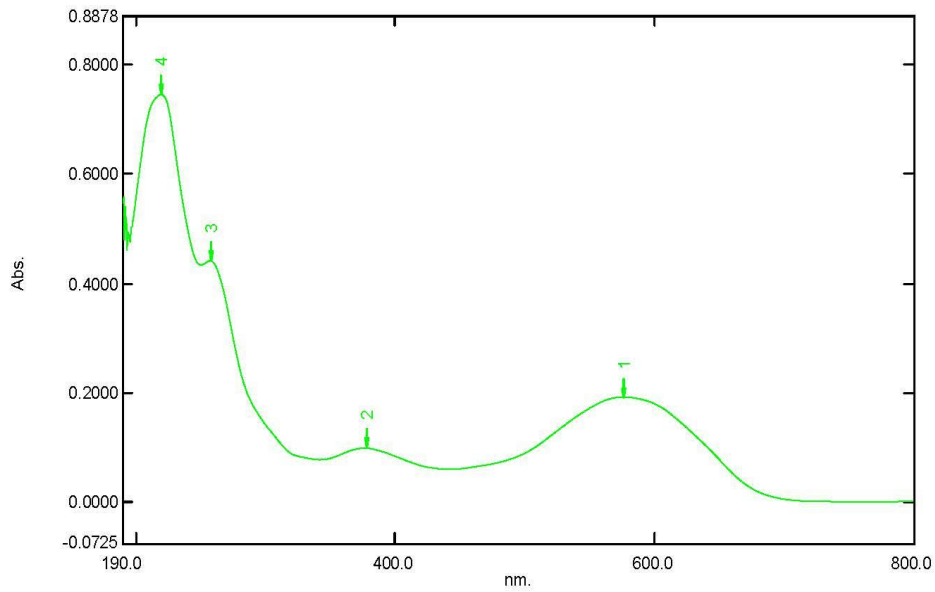
SC - SPUN DIACETATE

SW - SPUN WOOL

Spectrum Peak Pick Report

08-03-2019 04:32:11 PM

Data Set: DARK BLUE MTR B-2018-115 10PPM - RawData



[Measurement Properties]
Wavelength Range (nm.):
Scan Speed:
Sampling Interval:
Auto Sampling Interval:
Scan Mode:

190.0 to 800.0
Fast
0.5
Enabled
Single

No.	P/V	Wavelength	Abs.	Description
1	📍	576.5	0.1927	
2	📍	378.0	0.0995	
3	📍	257.5	0.4413	
4	📍	219.5	0.7450	

[Instrument Properties]

Instrument Type: UV-1900 Series
Measuring Mode: Absorbance
Slit Width: 1.0 nm
Light Source Change Wavelength: 340.8 nm
S/R Exchange: Normal

[Attachment Properties]

Attachment: None

[Operation]

Threshold: 0.0010000
Points: 4
InterPolate: Disabled
Average: Disabled

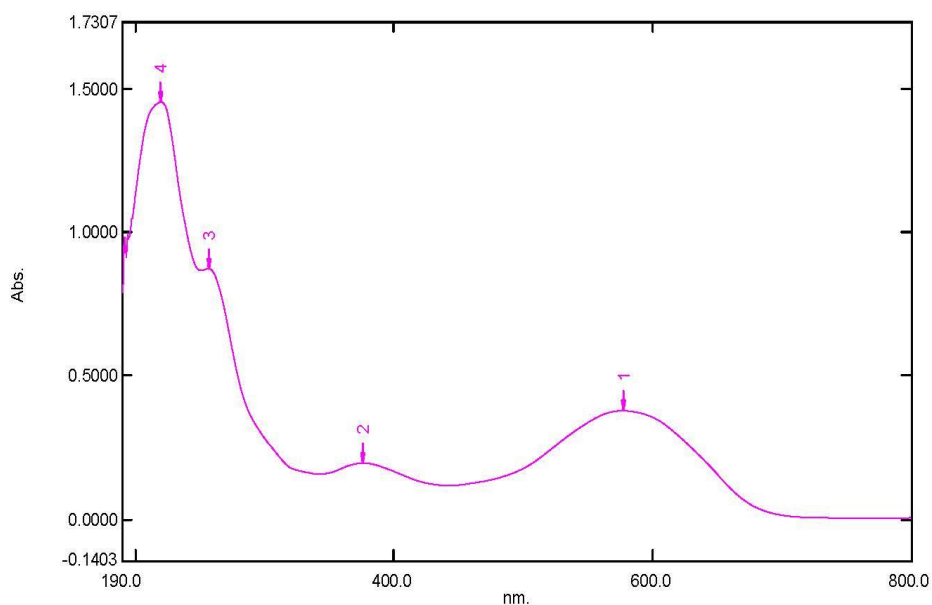
[Sample Preparation Properties]

Weight: 0.1
Volume: 100
Dilution: 10 ppm
Path Length:
Additional Information:

Spectrum Peak Pick Report

08-03-2019 04:42:38 PM

Data Set: DARK BLUE MTR B-2018-115 20PPM - RawData



[Measurement Properties]

Wavelength Range (nm.): 190.0 to 800.0
Scan Speed: Fast
Sampling Interval: 0.5
Auto Sampling Interval: Enabled
Scan Mode: Single

No.	P/V	Wavelength	Abs.	Description
1		577.5	0.3777	
2		376.0	0.1960	
3		256.5	0.8730	
4		219.5	1.4525	

[Instrument Properties]

Instrument Type: UV-1900 Series
Measuring Mode: Absorbance
Slit Width: 1.0 nm
Light Source Change Wavelength: 340.8 nm
S/R Exchange: Normal

[Attachment Properties]

Attachment: None

[Operation]

Threshold: 0.0010000
Points: 4
InterPolate: Disabled
Average: Disabled

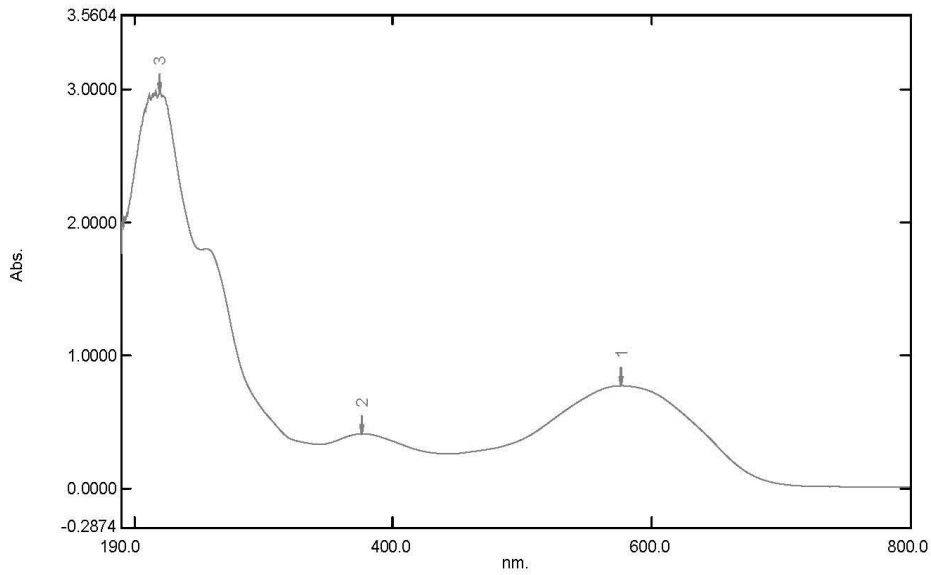
[Sample Preparation Properties]

Weight: 0.1
Volume: 100
Dilution: 20 ppm
Path Length:
Additional Information:

Spectrum Peak Pick Report

08-03-2019 04:46:34 PM

Data Set: DARK BLUE MTR B-2018-115 40PPM - RawData



[Measurement Properties]
 Wavelength Range (nm.): 190.0 to 800.0
 Scan Speed: Fast
 Sampling Interval: 0.5
 Auto Sampling Interval: Enabled
 Scan Mode: Single

No.	P/V	Wavelength	Abs.	Description
1	●	577.0	0.7712	
2	●	376.5	0.4097	
3	●	220.0	2.9797	

[Instrument Properties]
 Instrument Type: UV-1900 Series
 Measuring Mode: Absorbance
 Slit Width: 1.0 nm
 Light Source Change Wavelength: 340.8 nm
 S/R Exchange: Normal

[Attachment Properties]
 Attachment: None

[Operation]
 Threshold: 0.0010000
 Points: 4
 InterPolate: Disabled
 Average: Disabled

[Sample Preparation Properties]
 Weight: 0.1
 Volume: 100
 Dilution: 40 ppm
 Path Length:
 Additional Information: